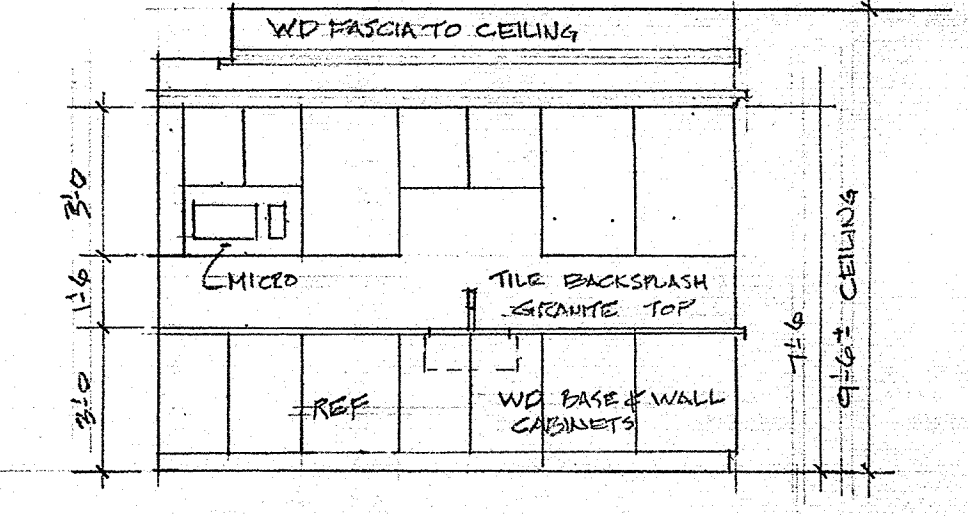
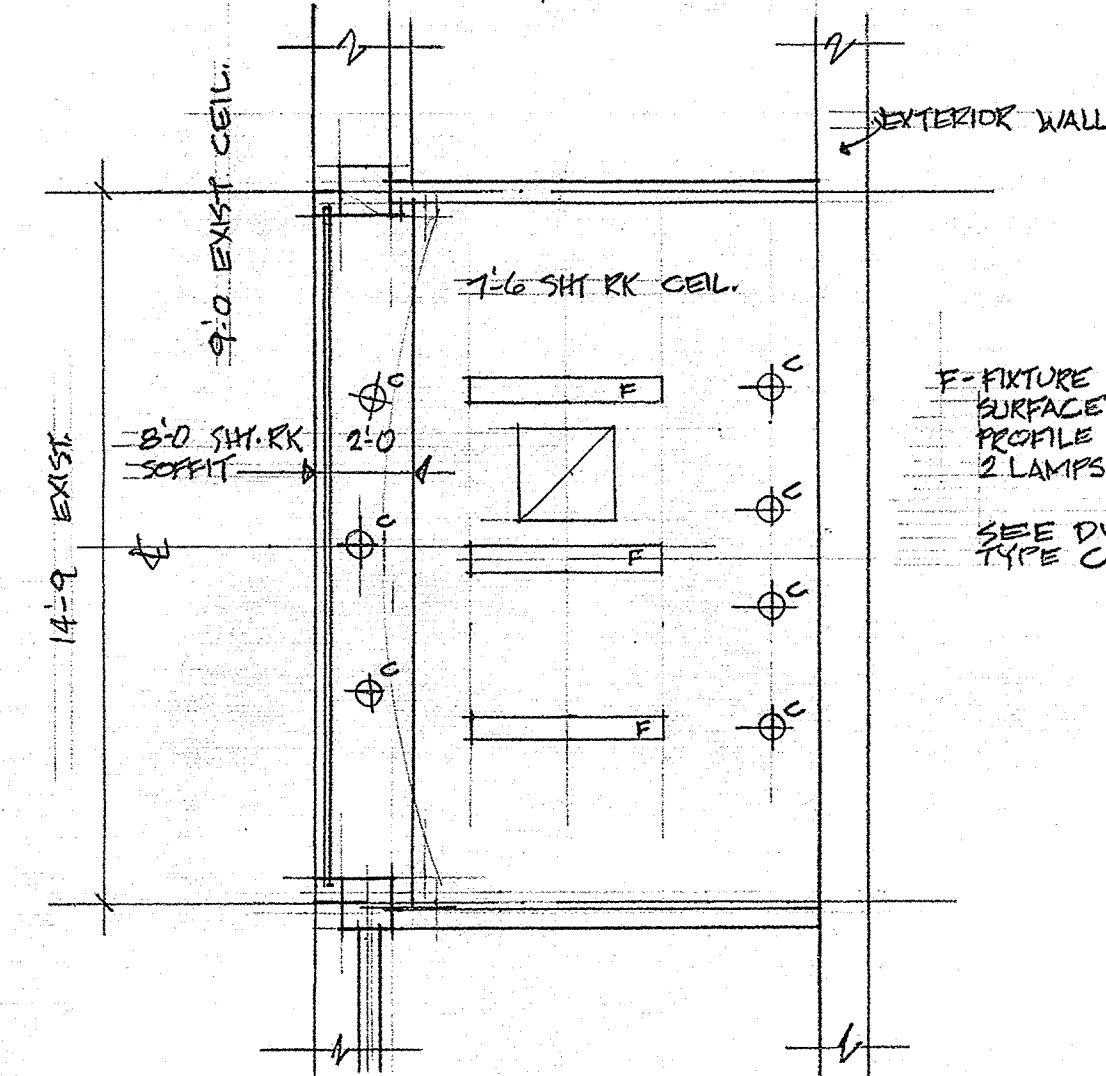
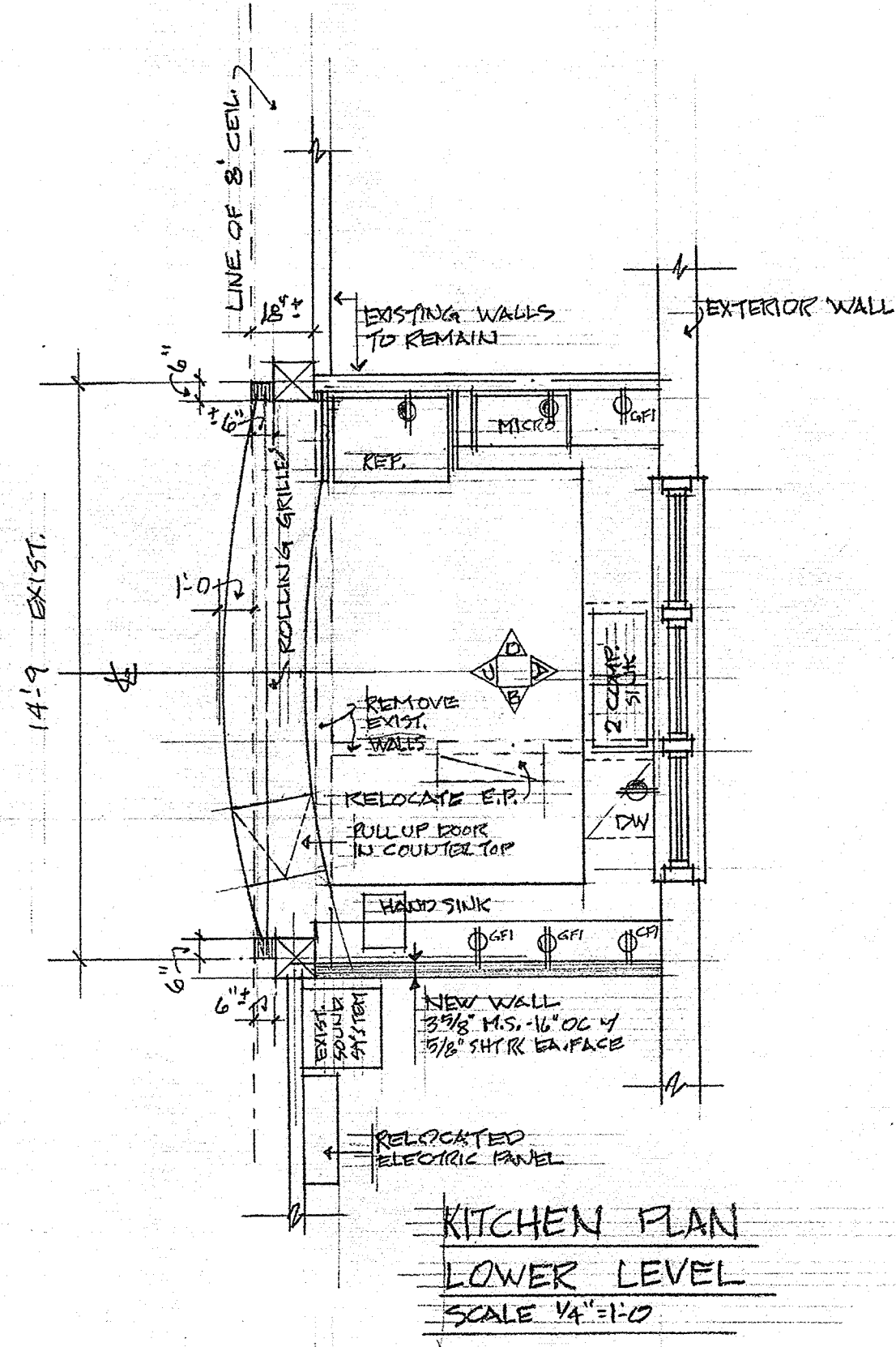
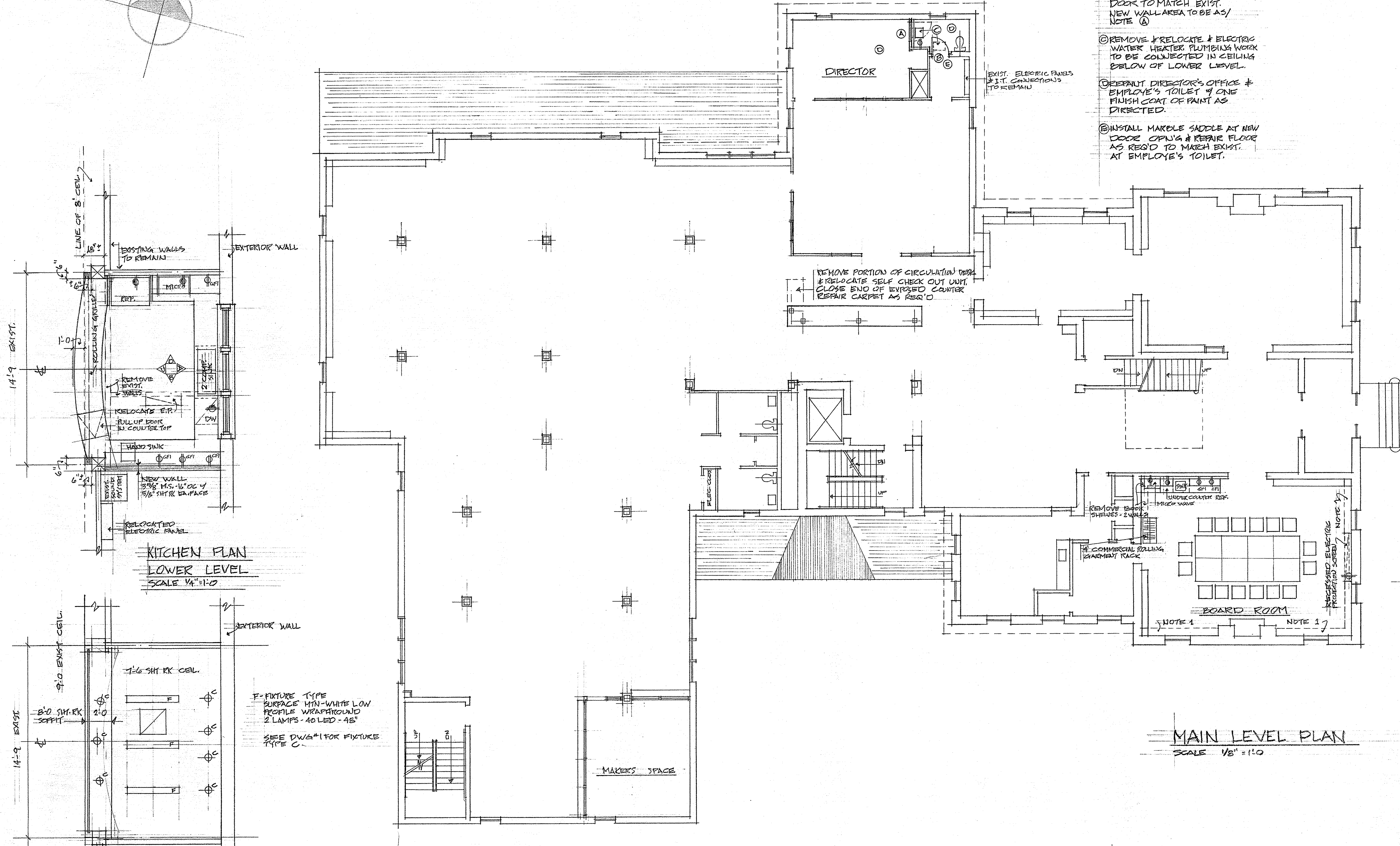


**NOTES**

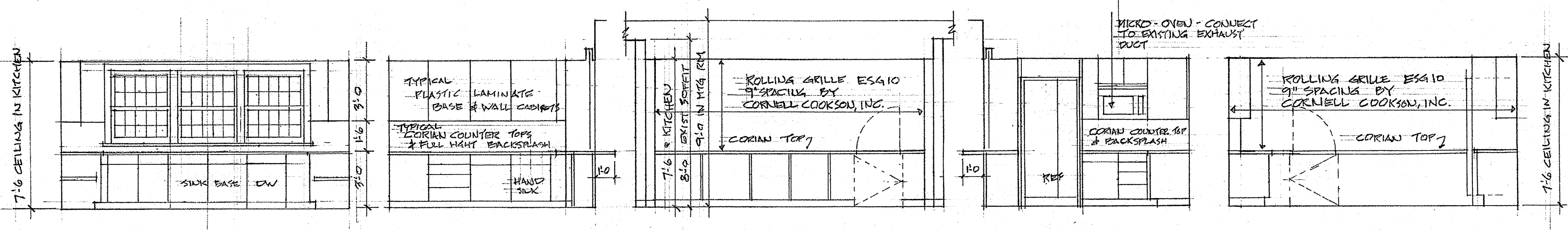
- ① REMOVE EXIST. DOOR & FRAME. CLOSE UP WALL w/ 3/8" METAL STUDS & 3/8" SHTRK EA. SIDE. INSTALL FULL THICK BATT INSULATION TAPE & APPLY 3 COATS COMPOUND SMOOTH w/ EXIST. SURFACES. BASE TO MATCH EXIST. PAINT WALLS & BASE TO MATCH EXIST. PAINT w/ PRIME COAT & TWO FINISH COATS AS DIRECTED.
- ② CUT NEW DOOR OPN'G & INSTALL NEW H.M. FRAME & 2 1/2" DOOR TO MATCH EXIST. NEW WALL AREA TO BE AS/NOTE ①
- ③ REMOVE & RELOCATE & ELECTRIC WATER HEATER. PLUMBING WORK TO BE CONNECTED IN CEILING BELOW OF LOWER LEVEL.
- ④ REPAIR DIRECTOR'S OFFICE & EMPLOYEE'S TOILET w/ ONE FINISH COAT OF PAINT AS DIRECTED.
- ⑤ INSTALL MARBLE SADDLE AT NEW DOOR OPN'G & REPAIR FLOOR AS REQ'D TO MATCH EXIST. AT EMPLOYEE'S TOILET.



**ELEVATION BOARD ROOM CABINETS**  
SCALE 1/4"=1'-0"

**NOTE 1**  
REMOVE BOOK CASES & SHELVES. CLOSE OPEN ENDS TO MEET EXTERIOR WALL. PATCH ALL DISTURBED AREAS TO MATCH EXISTING. INSTALL WOOD BASE TO MATCH EXISTING. INSTALL CHAIR RAIL "DCASE" 1 3/4 x 5 1/2 BY GARDEN STATE LUMBER CO. INSTALL ON OPEN SURFACES & BUTT CABINETS.

**MAIN LEVEL PLAN**  
SCALE 1/8"=1'-0"



**ELEVATION A**  
SCALE 1/4"=1'-0"

**ELEVATION B**  
SCALE 1/4"=1'-0"

**VIEW INTO KITCHEN FROM MTG RM**  
SCALE 1/4"=1'-0"

**ELEVATION D**  
SCALE 1/4"=1'-0"

**ELEVATION C**  
SCALE 1/4"=1'-0"

**JOHN S. MADZOLA**  
ARCHITECT  
20 THE BOULEVARD  
NEWTOWN, CT  
203-731-1461

**C.H. BOOTH LIBRARY**  
25 MAIN STREET  
NEWTOWN, CT

JULY 11, 2018  
REVISIONS:  
AUGUST 15, 2018

