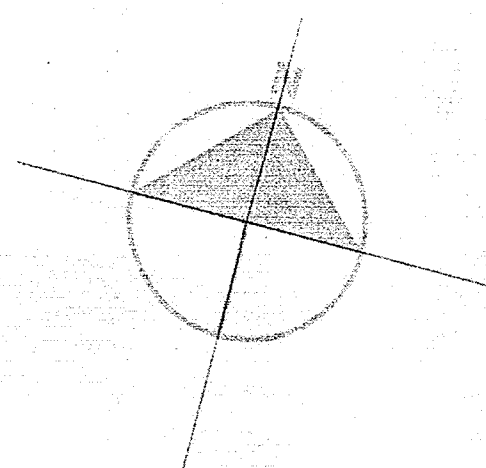
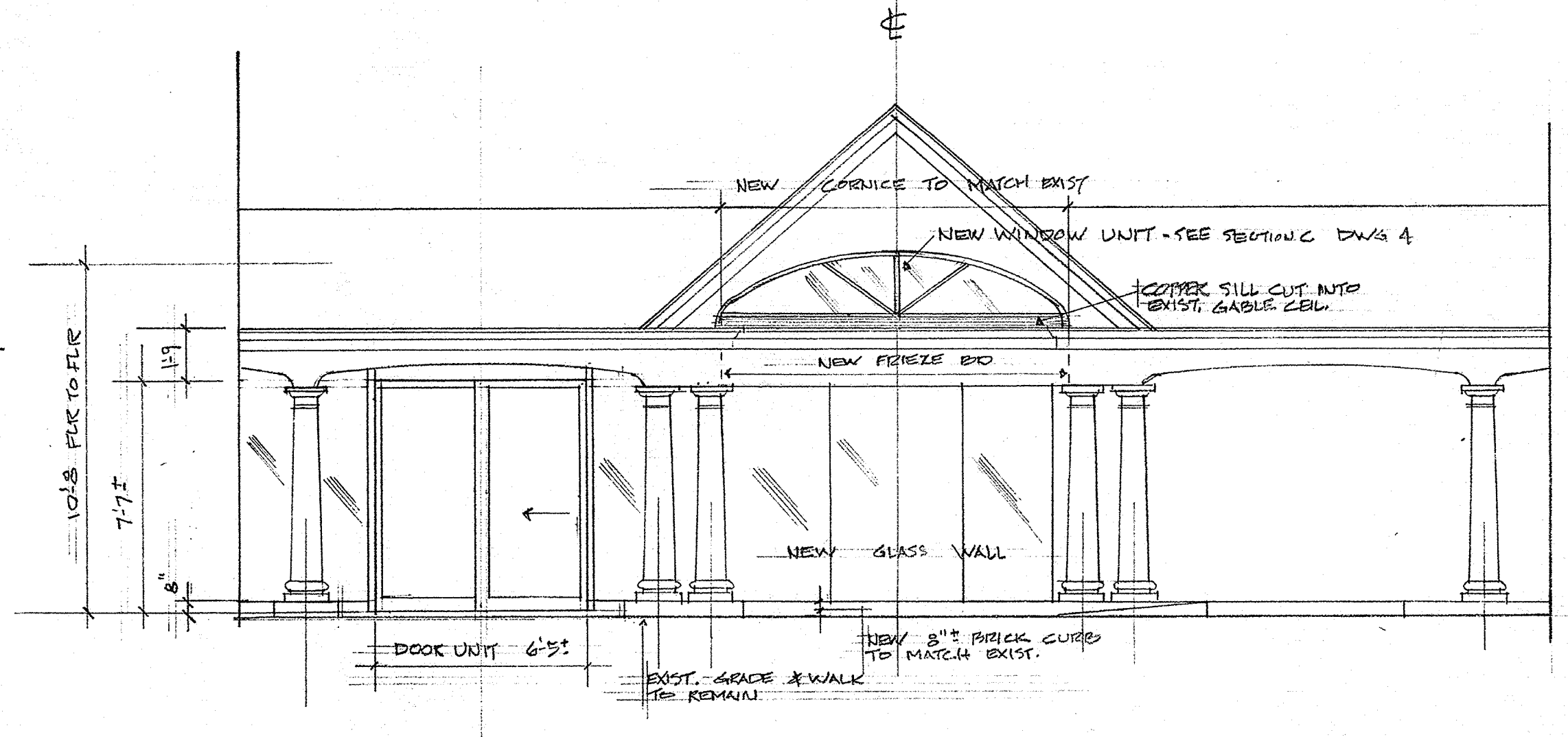
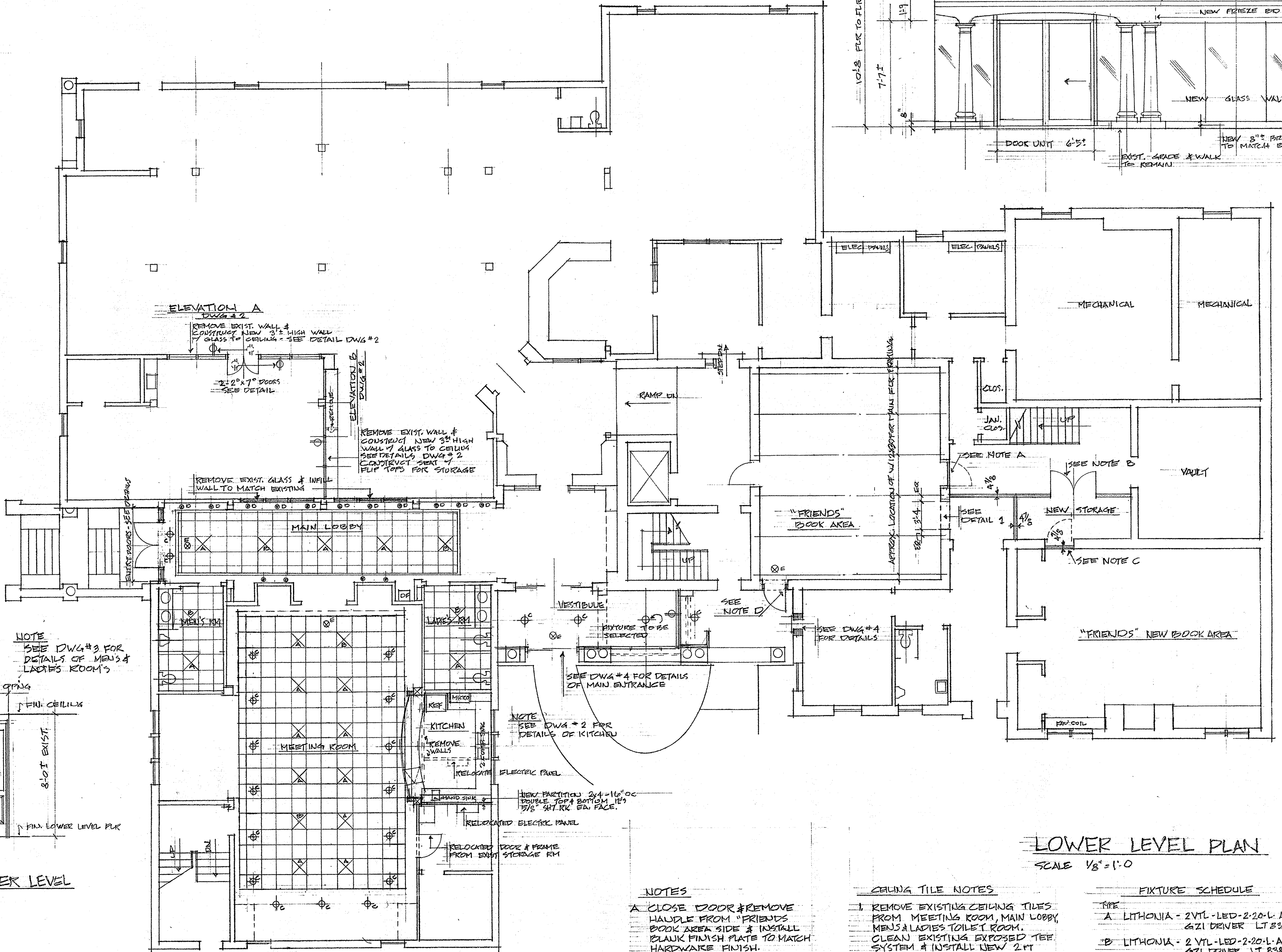


7-24-16

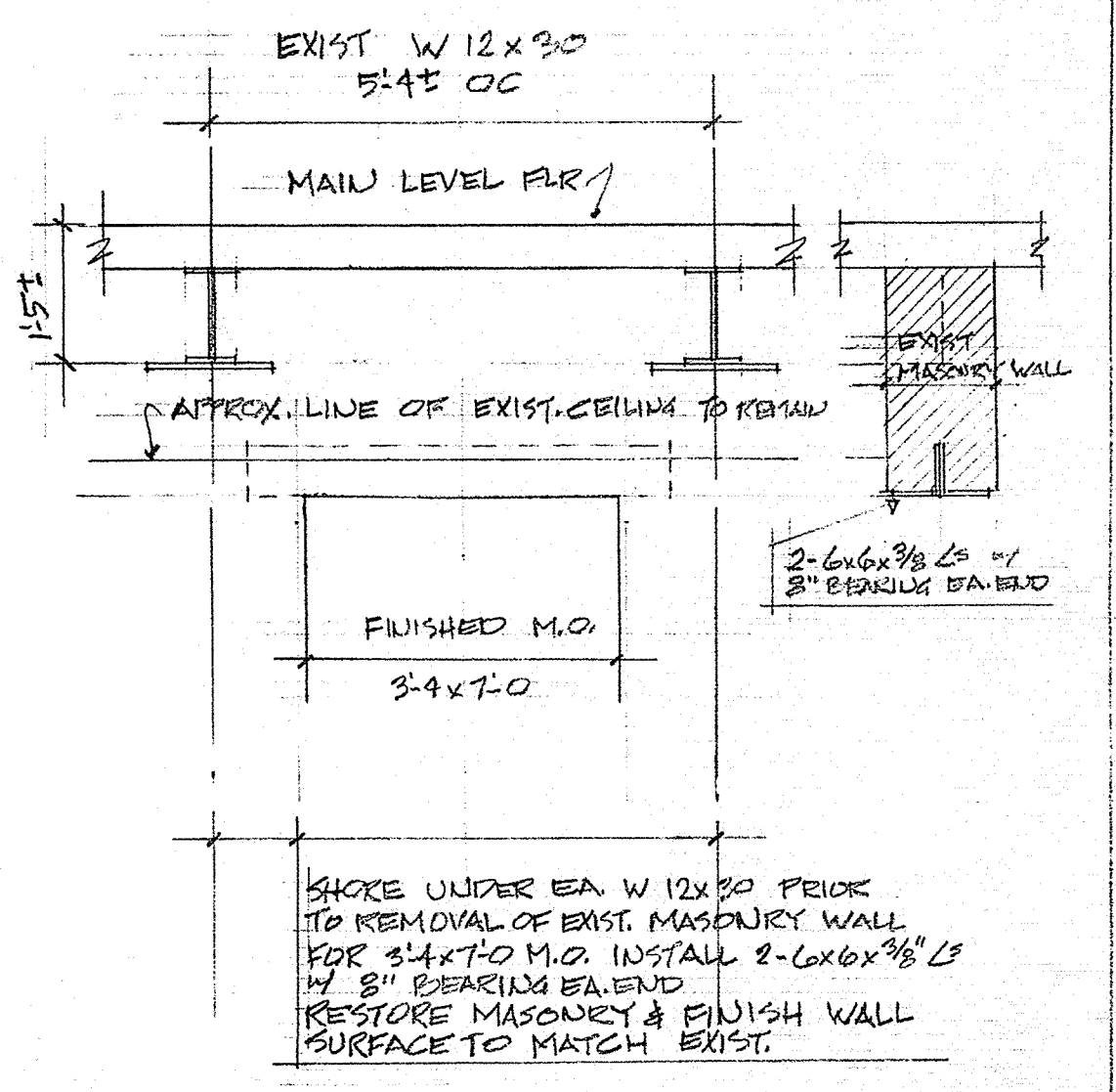


**ENTRY DOOR NOTES**

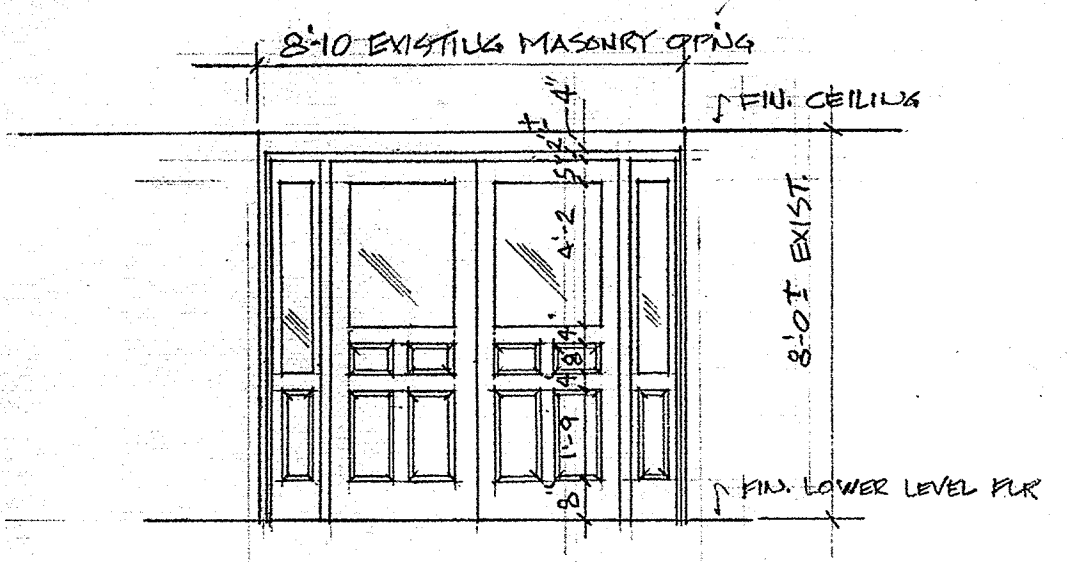
- DOORS SHALL BE COMPLETE WITH PUSH PAD EXIT DEVICES WITH CONCEALED VERTICAL ROD DEVICES FOR LOWER PAIRS OF DOORS. DOORS SHALL HAVE TOP & BOTTOM STRIKES FOR ENGAGEMENT OF VERTICAL ROD. DOORS TO HAVE QUIET ELECTRIC LATCH RETRACTION TO INTERFACE WITH ELECTRIC STRIKES & KEY CARD FOR "FORS" DUMMY TRIM PULL 676 DT ON EXTERIOR & 670 EO EXIT ONLY PLATE ON INTERIOR SIDE. DOORS TO HAVE SURFACE MOUNTED DOOR CLOSERS. ALL THE ABOVE TO BE AS MANUFACTURED BY "VON DÜPKN".
- DOORS SHALL BE COMPLETE WITH 5" x 5" x 5" KNUCKLE, FULL MORTISE HEAVY WEIGHT, NON REMOVABLE PIN BALL BEARING HINGES, 2PAIR/DOOR AS MANUFACTURED BY "IVES" ARCHITECTURAL HARDWARE COMPANY.
- ALL ENTRY DOOR HARDWARE FINISHES SHALL BE OIL RUBBED BRONZE OR EQUAL AS APPROVED.
- REMOVE EXISTING ENTRY DOOR & SIDELIGHTS AT LOWER LEVEL & INSTALL NEW RED OAK DOORS & SIDELIGHTS OF SIZE & AS PER DETAILS ON THIS DRAWING.
- DOORS & SIDELIGHTS SHALL BE AS MANUFACTURED BY "SIMPSON DOOR COMPANY, UPSTATE DOOR COMPANY" OR EQUAL AS APPROVED. SHOP DRAWINGS WILL BE REQUIRED FOR APPROVAL.
- DOORS & SIDELIGHTS SHALL HAVE TEMPERED LOW E, ARGON FILLED GLASS UNITS.
- DOORS SHALL BE WEATHERSTRIPPED w/ INTERLOCKING BRONZE UNITS, 4 SIDES.
- DOORS & SIDELIGHT UNITS TO HAVE A FULL LENGTH & WIDTH OIL RUBBED BRONZE SADDLE w/ INTERLOCK AT DOORS.



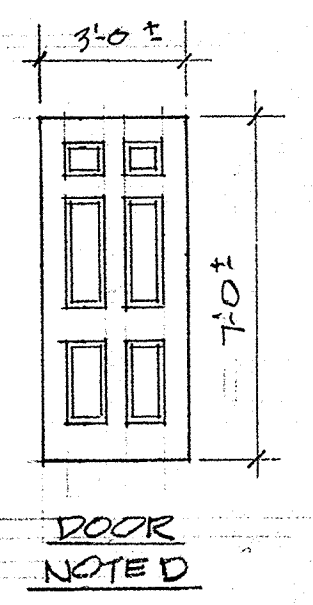
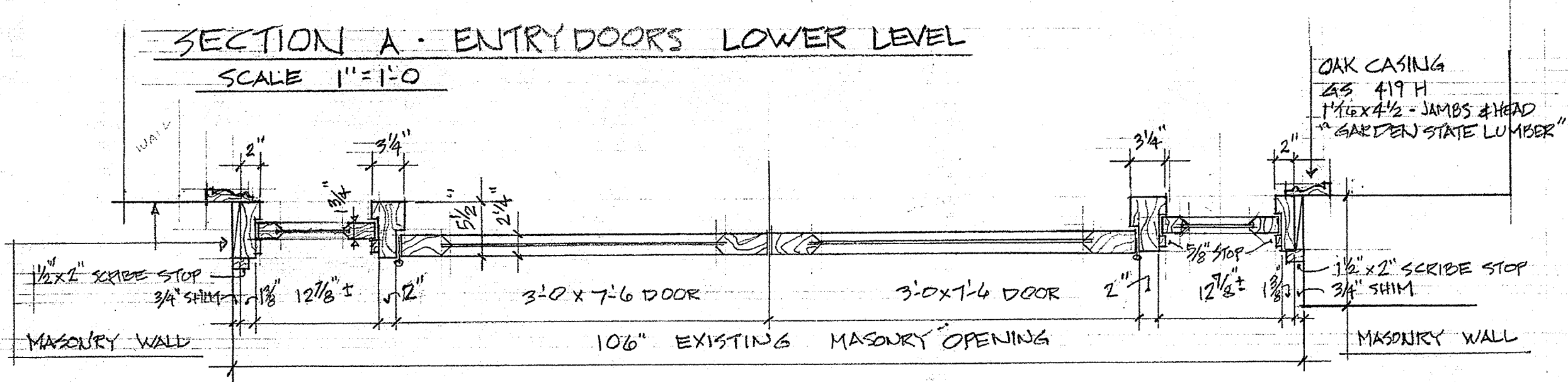
**MAIN ENTRANCE ENTRANCE**  
SCALE 1/4" = 1'-0"



**DETAIL 1**  
SCALE 1/2" = 1'-0"



**ENTRY DOORS - LOWER LEVEL**  
SCALE 1/4" = 1'-0"



**DOOR NOTE D**

**NOTES**

- CLOSE DOOR & REMOVE HANDLE FROM "FRIENDS BOOK AREA" SIDE & INSTALL BLANK FINISH PLATE TO MATCH HARDWARE FINISH.
- INSTALL PAIR 3'x7' FLUSH H.M. DOORS w/ H.M. FRAME, 4"8" THICK, DOOR & FRAME TO HAVE 1HR FIRE LABEL. HARDWARE TO MATCH EXISTING.
- REMOVE EXIST. DOOR & CLOSE OPENING w/ 3"8" M.S. 16" OC & 3/8" PC SHTRK EA FACE.
- REMOVE EXIST. WINDOW CUT MASONRY WALL TO FLOOR & INSTALL NEW H.M. FRAME & DOOR. EXIST. M.C. 8'4" DOOR TO BE WEATHERSTRIPPED w/ ALUMINUM SADDLE. DOOR TO BE COMPLETE w/ KEYS LOCKSET & INSULATION. FINISH INTERIOR JAMB & HEAD TO MATCH EXIST. SEE DOOR STYLE. VERIFY DOOR SIZE IN FIELD.

**CEILING TILE NOTES**

- REMOVE EXISTING CEILING TILES FROM MEETING ROOM, MAIN LOBBY, MEN'S & LADIES TOILET ROOM. CLEAN EXISTING EXPOSED TEE SYSTEM & INSTALL NEW 2 FT CROSS TEES IN MEETING ROOM TO SUPPORT NEW 2x2 RECESSED LIGHTING FIXTURES.
- INSTALL NEW MINERAL FIBER CEILING TILES BY "ARMSTRONG". CEILING TILES SHALL BE CIRCULAR 24" x 24" SECOND LOOK 716 AVAILABLE REGULAR.
- COORDINATE CEILING TILE INSTALLATION WITH SPRINKLER HEAD LOCATIONS & HVAC DIFFUSERS.
- PROVIDE EARTH QUAKE CLIPS FOR EACH CORNER OF ALL RECESSED FLOURESCANT FIXTURES THAT ARE IN SUSPENDED CEILING.

**FIXTURE SCHEDULE**

- | TYPE | DESCRIPTION   |
|------|---|
| A    | LITHONIA - 2VTL-LED-2-20-L-ADT 6ZI DRIVER LT 828                                  |
| B    | LITHONIA - 2VTL-LED-2-20-L-ADT 6ZI DRIVER LT 828 w/ EL 19L BATTERY PACK           |
| C    | JUNO - 5" TC 1400 LUMEN LED DOWNLIGHT w/ 5" WHITE Baffle DOWNLIGHT TRIM # 205 WWH |
| D    | JUNO - TEARAL 700 LUMENS LED DOWNLIGHT. REMOVE WALL WASH TRIM. WHITE 39 WWH-NOLBS |
| E    | ISOLITE - FLT-EM-R-16-BA-SW   |
| Ⓛ    | DUPLEX RECEPTACLE   |
| Ⓞ    | DEDICATED CIRCLE  |
| Ⓡ    | GROUND FAULT RECEPTACLE   |
- REMOVE ALL ELECTRICAL FIXTURES IN THE MAIN LOBBY, MEETING ROOM, KITCHEN, MEN'S & LADIES ROOM. INSTALL NEW FIXTURES AS LISTED & CONNECT TO LIGHTING CIRCUITS. REVISE EXISTING SWITCHING AS POSSIBLE TO CONNECT NEW FIXTURES.

**JOHN S. MADZULA**  
ARCHITECT  
20 THE BOULEVARD  
NEWTOWN, CT  
203.791.1461

**C.H. BOOTH LIBRARY**  
25 MAIN STREET  
NEWTOWN, CT

JULY 11, 2018  
REVISIONS:  
JULY 24, 2018  
AUGUST 15, 2018